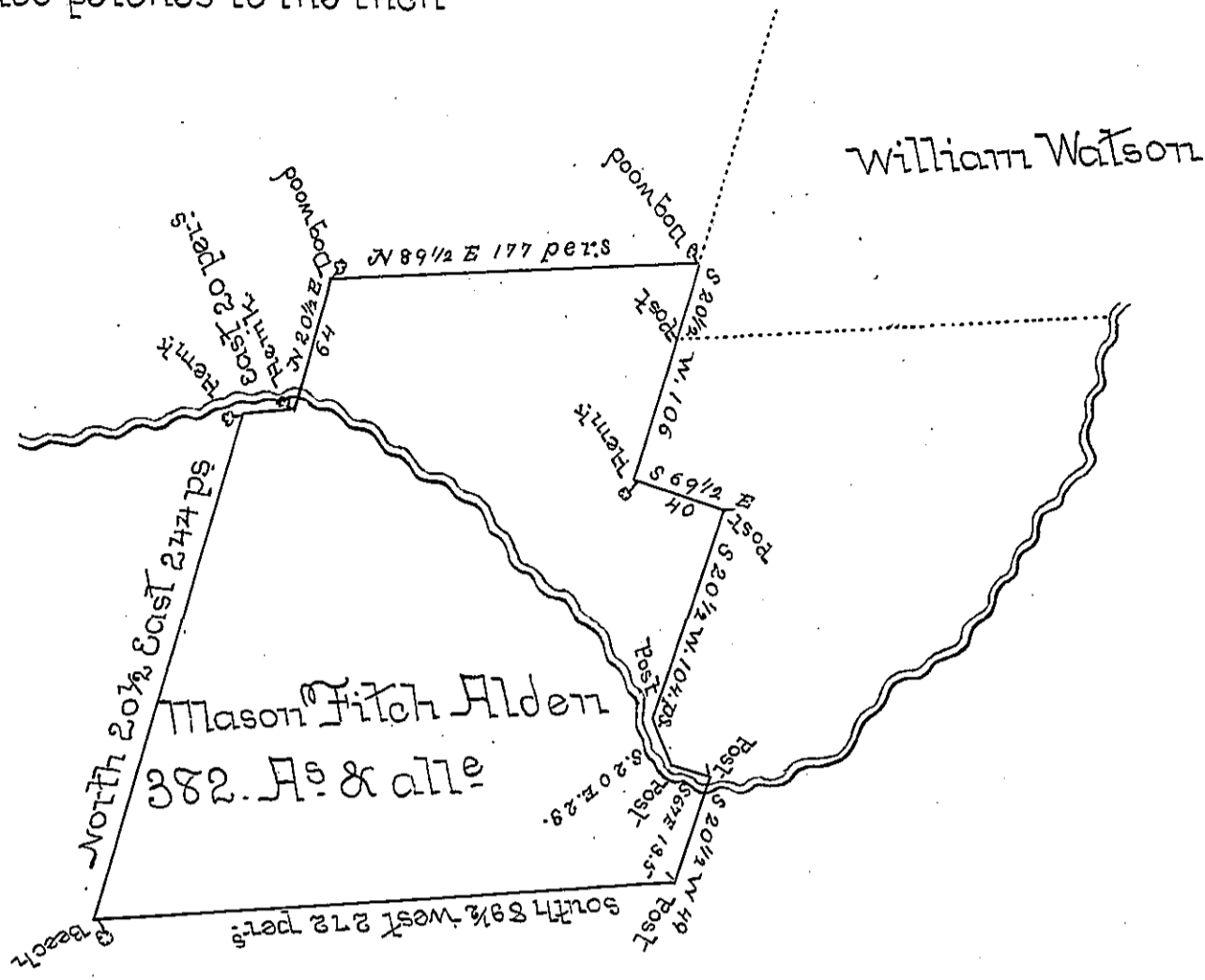


Scale 100 perches to the inch



A Draught of a tract of land. Situate on the West Side of the N.E. branch of the Susquehanna River about one Mile from Said River, on a Stream of Water Called Mahooperny in Luzerne County Containing three hundred and eighty two Acres of land with the usual all obl. of Six per cent for Roads, Surveyed the 6th day [obl.] January AD. 1808 in pursuance of Warrant bea obl.] date the Sixth day of July 1807 ~

Geo. Haines obl.

To Samuel Cochran Esq^r
Surveyor General

IN TESTIMONY that the above is a copy of the original remaining on file in the Department of Internal Affairs of Pennsylvania, made conformably to an Act of Assembly approved the 16th day of February, 1833, I have hereunto set my Hand and caused the Seal of said Department to be affixed at Harrisburg, this sixth day of April 1897.

James W. Latta
Secretary of Internal Affairs.